

## SHADE ELEMENTS



# Omni Screen

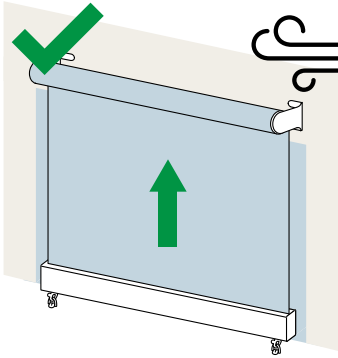
Shade Elements have brought together a range of versatile products from around the world to suit the New Zealand environment. These products provide protection from the harshest of conditions and the longevity required to be recognised as the best on the market.

Your Shade Elements Omni Screen has been manufactured to provide you with years of hassle-free weather protection with very little maintenance.

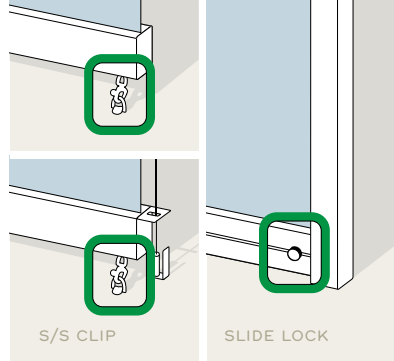


## GENERAL GUIDELINES

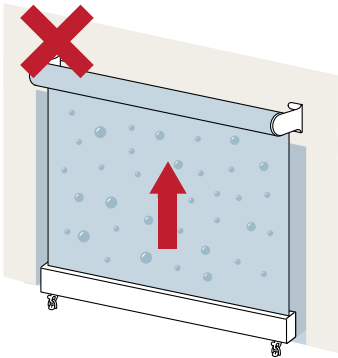
Screens should be used under supervision only as weather conditions can change quickly.



— Screens should be retracted in periods of high wind.



— When screen is lowered ensure **bottom locks are engaged** and the screen is in a taught position to prevent fabric from moving in the wind



— **DO NOT roll your screen away when the fabric is wet** as this can encourage growth of mould, mildew and cloudiness.

— Ensure all fasteners are secured correctly.

— Pelmet & Flashings are recommended where possible to prolong fabric lifespan and protect components.

— Powder coating to be cleaned regularly.

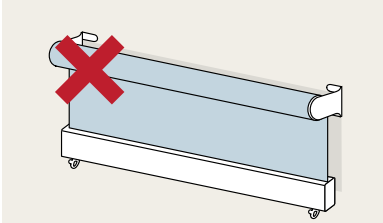
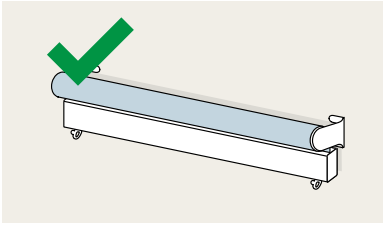
## OPERATION

— Lower screen to desired location.

— Fasten bottom rail in position with S/S clips or Slide Locks.

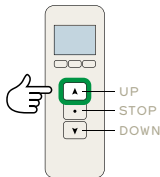
— Back tension gearbox/motor to tighten screen. **DO NOT over tighten as this can stretch fabric or potentially break the gearbox.**

— To raise screen, loosen the fabric by unwinding the gearbox, release slide locks or S/S clips and raise screen to the highest position. **When not in use DO NOT leave screen midway.**



WHEN NOT IN USE  
DO NOT LEAVE THE SCREEN MIDWAY

Automated screens are very easy to use, upper and lower limits are set during installation. On the remote simply push the button (up/down) to lower or raise your screen, this can be stopped in any position by pushing the centre button.



**IMPORTANT NOTE: 'UP' must always be used to return the screen to its retracted position.**

## HARDWARE MAINTENANCE

Your screen components are powder coated using Dulux powder coat systems. As a general rule cleaning should take place every six months. In areas where pollutants are more prevalent, such as beach front and industrial or geothermal areas, then a cleaning program should be carried out on a more frequent basis ie. one to three months.

## Maintenance Guidelines

- 1 Carefully remove any loose surface deposits with a wet sponge.
- 2 Use a soft brush (non abrasive) and a mild household detergent in warm water. **DO NOT use solvents.** Remove dust, salt and other deposits.
- 3 Rinse off with clean fresh water.

It is recommended to check the condition of all fasteners annually.

## FABRIC MAINTENANCE

### Sunscreen Mesh

Sunscreen mesh fabric should be brushed regularly with a non-abrasive brush and hosed down with clean cold water and left to dry completely before rolling up – this is important to prevent mould and mildew growth. For more stubborn stains a solution of mild detergent and luke-warm water. Rinse thoroughly and allow to dry completely before rolling away. Treat stains as soon as possible.

### Achilles Clear Pvc

The use of harsh chemicals for cleaning should be avoided, as these can scratch the surface or attack the material. Clear PVC should only be cleaned with a diluted solution of mild soap and warm water. Rinse with clean water and dry with a soft cloth or a sponge. **DO NOT use solvents or chemical cleaners. DO NOT expose sheets to abrasion.** We recommend Vuplex plastic cleaner/polish.

---

## WARRANTY

---

- Your Omni Screen comes with a two-year limited warranty on fabrication and all hardware components of the system.
  - Fabric skin warranties differ based on user selection.
  - The warranty will be void if the installation has not been completed according to specification or the following:
    - The maintenance plan is not followed.
    - Damage caused by extreme weather events.
    - Water ingress to the motor (caused by insufficient flashing).
    - Vandalism.
    - Incorrect operation or cleaning.
    - Clear PVC opaqueness due to rolling up when wet.
    - Gearbox unwinding from over tension.
    - Performance issues and/or abnormal wear & tear issues relating to products that exceed manufacturers size recommendations.
    - All costs associated with product removal and re-installation.
    - Alterations or repairs that are not authorised.
    - Exposure to chemicals or corrosive elements such as a marine or salt air environment, cleaning products or insects.
    - Exposure to high humidity environments resulting in mould, mildew or fungal growths.
- 

